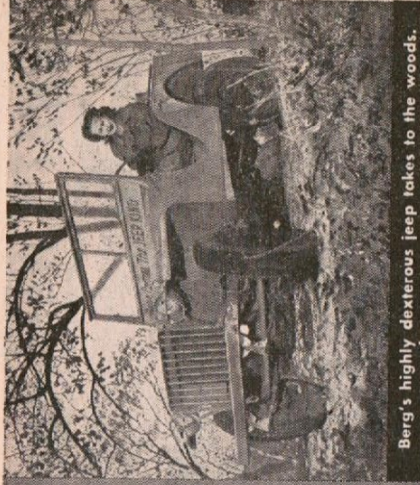
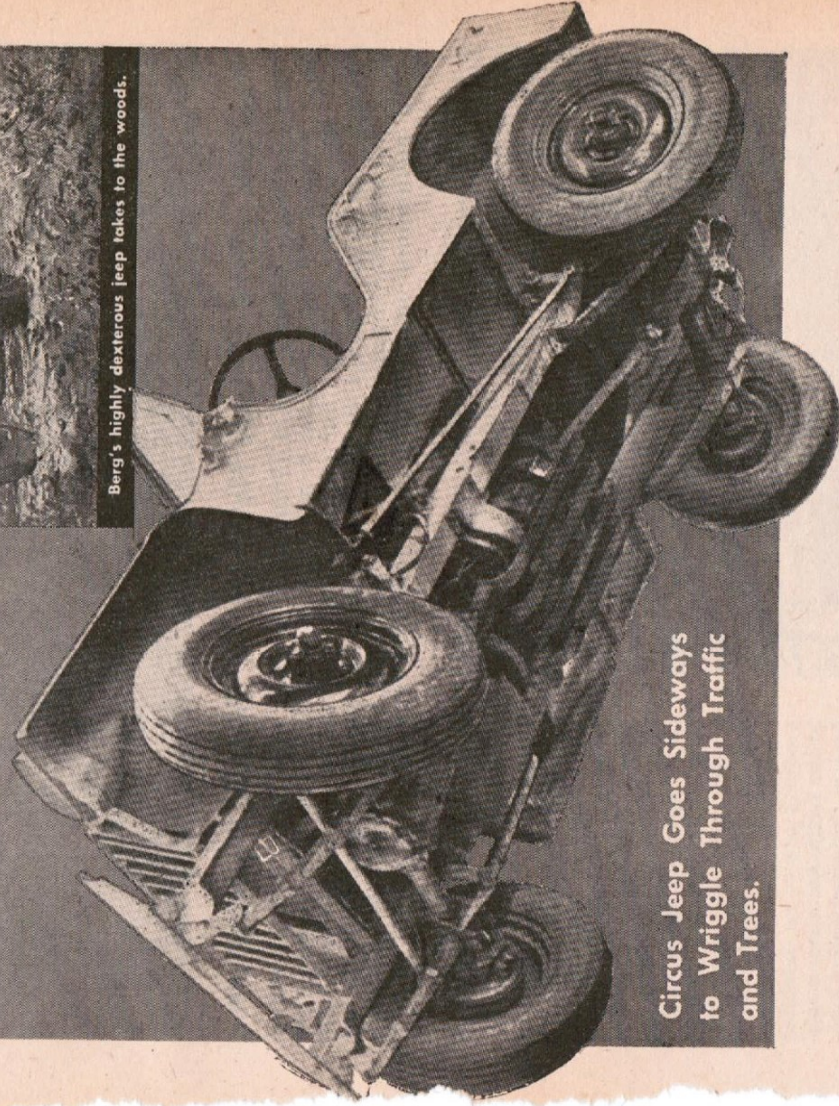


# FOUR Wheel STEER



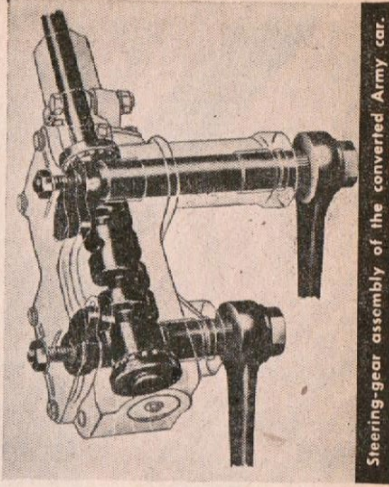
Berg's highly dexterous jeep takes to the woods.



Circus Jeep Goes Sideways  
to Wriggle Through Traffic  
and Trees.

**T**HOUGH it was built to perform in a circus, a trick jeep that can move sideways and turn around in its own length has practical uses as well. Equipped with a front axle both in back and in front, the Army car of all work was made over for its starring role by the Berg Truck & Parts Co., of Chicago.

With all four wheels perfectly aligned and linked to one steering column through steering knuckles on both axles, the jeep squirms through tight places like a quarter-back and can be parked in a space of less than 14 feet. Such agility makes it a possibility for hunters, forest rangers, and others who need nimble transportation.



Steering-gear assembly of the converted Army car.